

One Investment, Dual Goals

Aditya Birla Sun Life ELSS Tax Saver Fund

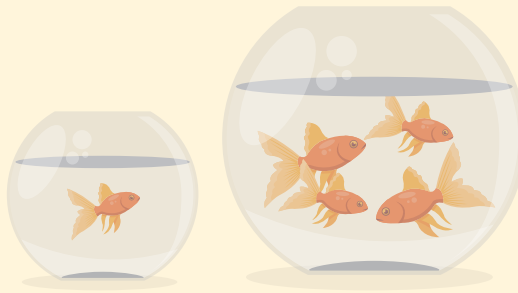
(An open-ended equity linked saving scheme with a statutory lock in of 3 years and tax benefit)

Monthly SIP of
₹10,000
started 16 years[#] ago

would have
grown to
**₹69.06
Lakhs**
TODAY!



Investment of
₹1 Lakh grew to



₹2.29 Crores
in 28 years^{*}

[#]SIP Start Date: April 01, 2008 | ^{*}Inception Date: March 29, 1996

Why invest in Aditya Birla Sun Life ELSS Tax Saver Fund?



Offers tax benefits under Section 80C of the Income Tax Act, 1961.



Provides equity growth potential through its diversified portfolio of large, mid, and small-cap stocks



Has a lock-in period of three years, which encourages long-term investments.

The scheme name has been revised effective December 6, 2023. The scheme was earlier known as Aditya Birla Sun Life ELSS Tax Relief '96.

For quick transaction, generate your exclusive
ABSLMF
PARTNER EASYLINK
CLICK HERE

Scan QR code to know more about the fund



Scheme Performance Summary

Aditya Birla Sun Life ELSS Tax Saver Fund - Regular Plan - Growth Option		NAV as on June 30, 2024: ₹57.90		
Fund Manager: Mr. Atul Penkar (Since December 28, 2021), Mr. Dhaval Gala (Since April 1, 2022) & Mr. Dhaval Joshi (Since November 21, 2022)				
Particulars	CAGR % Returns			
	Since Inception	5 Years	3 Years	1 Year
Aditya Birla Sun Life ELSS Tax Saver Fund	21.21%	13.30%	13.20%	34.76%
B: Nifty 500 TRI	NA	19.76%	20.01%	38.79%
AB: Nifty 50 TRI	13.48%	16.66%	16.55%	26.74%
Current Value of Standard Investment of ₹10,000 invested (in ₹)				
Aditya Birla Sun Life ELSS Tax Saver Fund	22,94,550	18,683	14,500	13,465
B: Nifty 500 TRI	NA	24,660	17,276	13,867
AB: Nifty 50 TRI	3,57,035	21,626	15,826	12,666
Inception Date: March 29, 1996				

Past performance may or may not be sustained in future. The above performance is of Regular Plan - Growth Option. Kindly note that different plans have different expense structure. Load and Taxes are not considered for computation of returns. When scheme/additional benchmark returns are not available, they have not been shown. Total Schemes Co-Managed by Fund Managers is 2. Total Schemes managed by Mr. Atul Penkar is 3. Total Scheme managed by Mr. Dhaval Gala is 7. Total Schemes managed by Mr. Dhaval Joshi is 52. All IDCW declared prior to the splitting of the Scheme into IDCW & Growth Options are assumed to be reinvested in the units of the Scheme at the then prevailing NAV (ex-IDCW NAV). The scheme is currently managed by Mr. Atul Penkar since December 31, 2021 (2.6 years), Mr. Dhaval Gala since April 01, 2022 (2.2 years) & Mr. Dhaval Joshi since November 21, 2022 (1.7 years).

PERFORMANCE OF OTHER OPEN-ENDED SCHEMES MANAGED BY MR. ATUL PENKAR						
Fund Manager: Mr. Atul Penkar						
Schemes Names	CAGR % Returns					
	5 Years		3 Years		1 Year	
	Scheme	Benchmark	Scheme	Benchmark	Scheme	Benchmark
Aditya Birla Sun Life Bal Bhavishya Yojna	13.11%	19.76%	13.69%	20.01%	31.05%	38.79%
Aditya Birla Sun Life Equity Advantage Fund	16.56%	22.66%	14.10%	22.76%	35.59%	44.32%

Note:
a. Mr. Atul Penkar manages 3 open-ended schemes of Aditya Birla Sun Life Mutual Fund.
b. Different plans shall have a different expense structure. The performance details provided herein are of Regular Plan - Growth Option.

PERFORMANCE OF OTHER OPEN-ENDED SCHEMES MANAGED BY MR. DHAVAL GALA						
Fund Manager: Mr. Dhaval Gala						
Scheme Names	CAGR % Returns					
	5 Years		3 Years		1 Year	
	Scheme	Benchmark	Scheme	Benchmark	Scheme	Benchmark
Aditya Birla Sun Life Dividend Yield Fund	23.10%	19.76%	24.25%	20.01%	50.60%	38.79%
Aditya Birla Sun Life Banking & Financial Services Fund	13.28%	12.36%	16.06%	13.53%	24.90%	17.95%
Aditya Birla Sun Life PSU Equity Fund	NA	26.95%	39.85%	45.40%	92.94%	104.21%
Aditya Birla Sun Life ESG Fund	NA	NA	13.38%	15.69%	30.13%	32.82%
Aditya Birla Sun Life Business Cycle Fund	NA	NA	NA	NA	33.47%	38.40%

Note:
a. Mr. Dhaval Gala manages 7 open-ended schemes of Aditya Birla Sun Life Mutual Fund.
b. Different plans shall have a different expense structure. The performance details provided herein are of Regular Plan - Growth Option.

PERFORMANCE OF OTHER OPEN ENDED SCHEME MANAGED BY MR. DHAVAL JOSHI						
Fund Manager: Mr. Dhaval Joshi						
Scheme Names	CAGR % Returns					
	5 Years		3 Years		1 Year	
	Scheme	Benchmark	Scheme	Benchmark	Scheme	Benchmark
Aditya Birla Sun Life Bal Bhavishya Yojna	13.11%	19.76%	13.69%	20.01%	31.05%	38.79%
Aditya Birla Sun Life Infrastructure Fund	24.46%	23.75%	30.02%	29.61%	60.64%	60.97%
Aditya Birla Sun Life Equity Advantage Fund	16.56%	22.66%	14.10%	22.76%	35.59%	44.32%
Aditya Birla Sun Life Midcap Fund	21.72%	27.90%	23.41%	27.97%	49.17%	56.63%
Aditya Birla Sun Life Dividend Yield Fund	23.10%	19.76%	24.25%	20.01%	50.60%	38.79%
Aditya Birla Sun Life Banking & Financial Services Fund	13.28%	12.36%	16.06%	13.53%	24.90%	17.95%

Note:
a. Mr. Dhaval Joshi manages 52 open-ended schemes of Aditya Birla Sun Life Mutual Fund.
b. Different plans shall have a different expense structure. The performance details provided herein are Regular Plan - Growth Option.

Scheme Performance Summary



SIP PERFORMANCE - REGULAR PLAN - GROWTH (ASSUMING SIP OF ₹10,000 PER MONTH)

Fund Manager: Mr. Atul Penkar, Mr. Dhaval Gala & Mr. Dhaval Joshi

Particulars	Since Inception	5 Year	3 Year	1 Year
Total Amount Invested (in ₹)	19,60,000	6,00,000	3,60,000	1,20,000
Market Value of amount Invested	69,06,444	9,24,927	4,88,806	1,45,269
Scheme Returns (CAGR)	14.00%	17.39%	21.01%	41.90%
B: Nifty 500 TRI Returns (CAGR)	15.63%	24.76%	25.50%	43.24%
AB: Nifty 50 TRI Returns (CAGR)	14.24%	20.44%	19.80%	31.54%

The fund's inception date is March 06, 2008, and the initial SIP installment is considered to have been made on that date. Subsequent installments occur on the first day of every following month.

PRODUCT LABEL

Name of Scheme	This product is suitable for investors who are seeking*:	Riskometer	Benchmark Riskometer Nifty 500 TRI
Aditya Birla Sun Life ELSS Tax Saver Fund (An open-ended equity linked saving scheme with a statutory lock in of 3 years and tax benefit)	<ul style="list-style-type: none"> Long term capital growth Investments in equity and equity related securities, with tax benefit under section 80C, subject to eligibility 	 <p>Investors understand that their principal will be at Very High risk.</p>	 <p>Investors understand that their principal will be at Very High risk.</p>
*Investors should consult their financial advisors if in doubt whether the product is suitable for them.			

Data as on June 30, 2024 | B: Benchmark | AB: Additional Benchmark

The scheme name has been revised effective December 6, 2023. The scheme was earlier known as Aditya Birla Sun Life ELSS Tax Relief '96.

Aditya Birla Sun Life AMC Limited /Aditya Birla Sun Life Mutual Fund is not guaranteeing/offering/communicating any indicative yield/returns on investments.

Past performance of any product does not indicate its future performance.